



## FLANGES

BLIND RAISED FACE -  
FORGED 150# - CARBON STEEL

### FEATURES & APPLICATIONS:

- A flange is a method of connecting pipes, valves, pumps & other equipment to form a piping system.

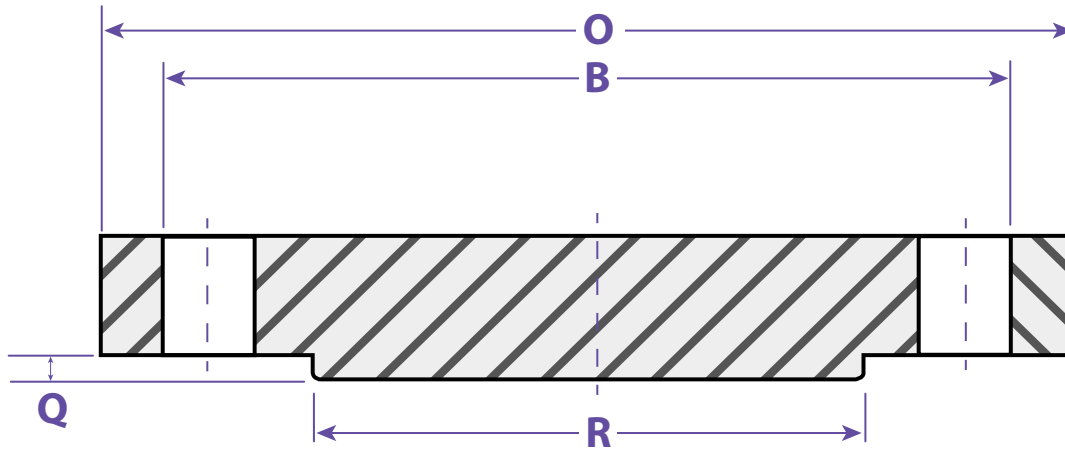


CARBON STEEL

| FORGED 150 |              |
|------------|--------------|
| ID         | CARBON STEEL |
| 1"         | BLF100       |
| 1-1/4"     | BLF125       |
| 1-1/2"     | BLF150       |
| 2"         | BLF200       |
| 2-1/2"     | BLF250       |
| 3"         | BLF300       |
| 4"         | BLF400       |
| 5"         | BLF500       |
| 6"         | BLF600       |
| 8"         | BLF800       |
| 10"        | BLF000       |
| 12"        | BLF1200      |



Information contained on this page is for general information purposes only. Seal Fast Inc. assumes no responsibility for errors or omissions for this product.



| Dimensions |             |                       |                 |                    |                  |         |
|------------|-------------|-----------------------|-----------------|--------------------|------------------|---------|
| Size       | Overall Dim | Raised Face           | Raised Face Dim | Bolt Holes # / Dim | Bolt Hole Circle | Part #  |
|            | O           | Q<br>(1/16 thickness) | R               |                    | B                |         |
| 1"         | 4.25        | 0.56                  | 2.00            | 4-0.62             | 3.12             | BLF100  |
| 1-1/4"     | 4.62        | 0.62                  | 2.50            | 4-0.62             | 3.50             | BLF25   |
| 1-1/2"     | 5.00        | 0.68                  | 2.88            | 4-0.62             | 3.88             | BLF150  |
| 2"         | 6.00        | 0.75                  | 3.62            | 4-0.75             | 4.75             | BLF200  |
| 2-1/2"     | 7.00        | 0.88                  | 3.56            | 4-0.75             | 5.50             | BLF250  |
| 3"         | 7.50        | 0.94                  | 4.25            | 4-0.75             | 6.00             | BLF300  |
| 4"         | 9.00        | 0.94                  | 5.31            | 8-0.75             | 7.50             | BLF400  |
| 5"         | 10.00       | 0.94                  | 6.44            | 8-0.88             | 8.50             | BLF500  |
| 6"         | 11.00       | 1.00                  | 7.56            | 8-0.88             | 9.50             | BLF600  |
| 8"         | 13.50       | 1.12                  | 10.62           | 8-0.88             | 11.75            | BLF800  |
| 10"        | 16.00       | 1.19                  | 12.75           | 12-1.00            | 14.25            | BLF1000 |
| 12"        | 19.00       | 1.25                  | 15.00           | 12-1.00            | 17.00            | BLF1200 |

**TITLE FLANGES - BLIND RAISED FACE / FORGED 150#**

**DISCLAIMER**  
All drawings and specifications are subject to change without notice. Drawings represent general dimensions of our products. Seal Fast cannot guarantee the dimensions of the part will exactly match those in the drawing. This drawing is the property of Seal Fast Inc. Copying or reproduction of this drawing is expressly prohibited.

**MATERIAL**  
  
Carbon Steel

**DRAWING NOT TO SCALE**

**PART #**  
BLF...

